

## Vehicle Information

Assignment: Find and record vehicle data.

Make: \_\_\_\_\_ Nissan \_\_\_\_\_

Model: \_\_\_\_\_ Sentra \_\_\_\_\_

Production Date: \_\_\_\_\_ 04/18 \_\_\_\_\_ (April 2018) \_\_\_\_\_

### Tire placard information

Tire size: \_\_\_\_\_ P205/55R16 \_\_\_\_\_

Tire pressure: \_\_\_\_\_ 230 kPa, 33PSI \_\_\_\_\_

### Tire Brand Information (located on tire sidewall)

Tire Brand: \_\_\_\_\_ Kelly \_\_\_\_\_

Tire model: \_\_\_\_\_ Edge A/S \_\_\_\_\_

Tire Size: \_\_\_\_\_ 205/55R16 \_\_\_\_\_

Department of Transportation (DOT) Tire numbers: PLOFUU1R 0219

If able, add pictures to document information:

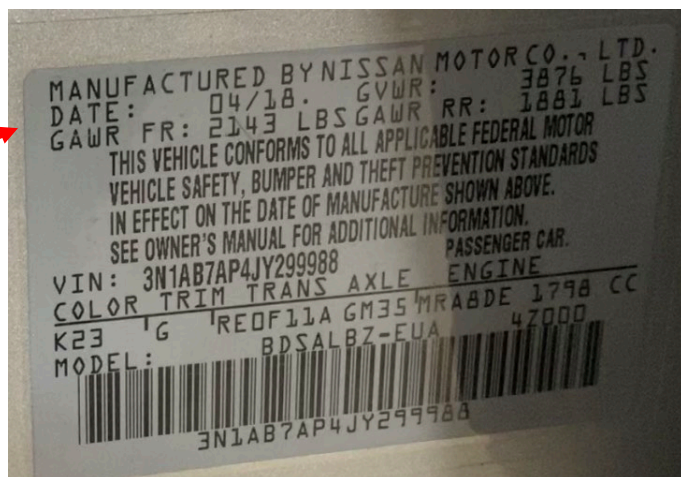


Make: Nissan

Model: Sentra



Production date:



# Tire Placard

Tire Size / Pressure

TIRE AND LOADING INFORMATION		RENSEIGNEMENTS SUR LES PNEUS ET LE CHARGEMENT				
SEATING CAPACITY NOMBRE DE PLACES	TOTAL	5	FRONT AVANT	2	REAR ARRIÈRE	3
The combined weight of occupants and cargo should never exceed 390 kg or 860 lbs. Le poids total des occupants et du chargement ne doit jamais dépasser 390 kg ou 860 lb.						
TIRE PNEU	SIZE DIMENSIONS	COLD TIRE PRESSURE PRESSION DES PNEUS À FROID		SEE OWNER'S MANUAL FOR ADDITIONAL INFORMATION VOIR LE MANUEL DE L'USAGER POUR PLUS DE RENSEIGNEMENTS		
FRONT AVANT	P205/55R16 89H	230kPa , 33PSI				
REAR ARRIÈRE	P205/55R16 89H	230kPa , 33PSI				
SPARE DE SECOURS	T125/70D16 96M	420kPa , 60PSI				
					3S	3SG2A

# Tire Information



Tire Brand



Tire Model



Size



DOT